

**MULTOTEC**

CENTRIFUGAL SafeR® SERIES SLURRY PUMPS



## SafeR® Series Slurry Pumps

Heavy duty pump range for continuous pumping of highly abrasive or dense slurries in processes from cyclone feed to regrind, flotation and tailings.

SafeR® series slurry pumps are a safe and environmentally friendly solution ideal for harsh mining conditions.

The pump footprint and all parts are fully interchangeable with the 60-year-old 'AH' workhorse, enabling old pumps to be retrofitted with safer designs. Upgrades are also available to extend pump life and reduce maintenance time with the One Liner™, Gland Guard™, Bearing Guard™, Safer-Seal™ or Wolfram long life shaft sleeves.

We currently hold extensive pump builds from 1.5/1 to 8/6, with competitive lead times for larger sizes.

### Specifications:

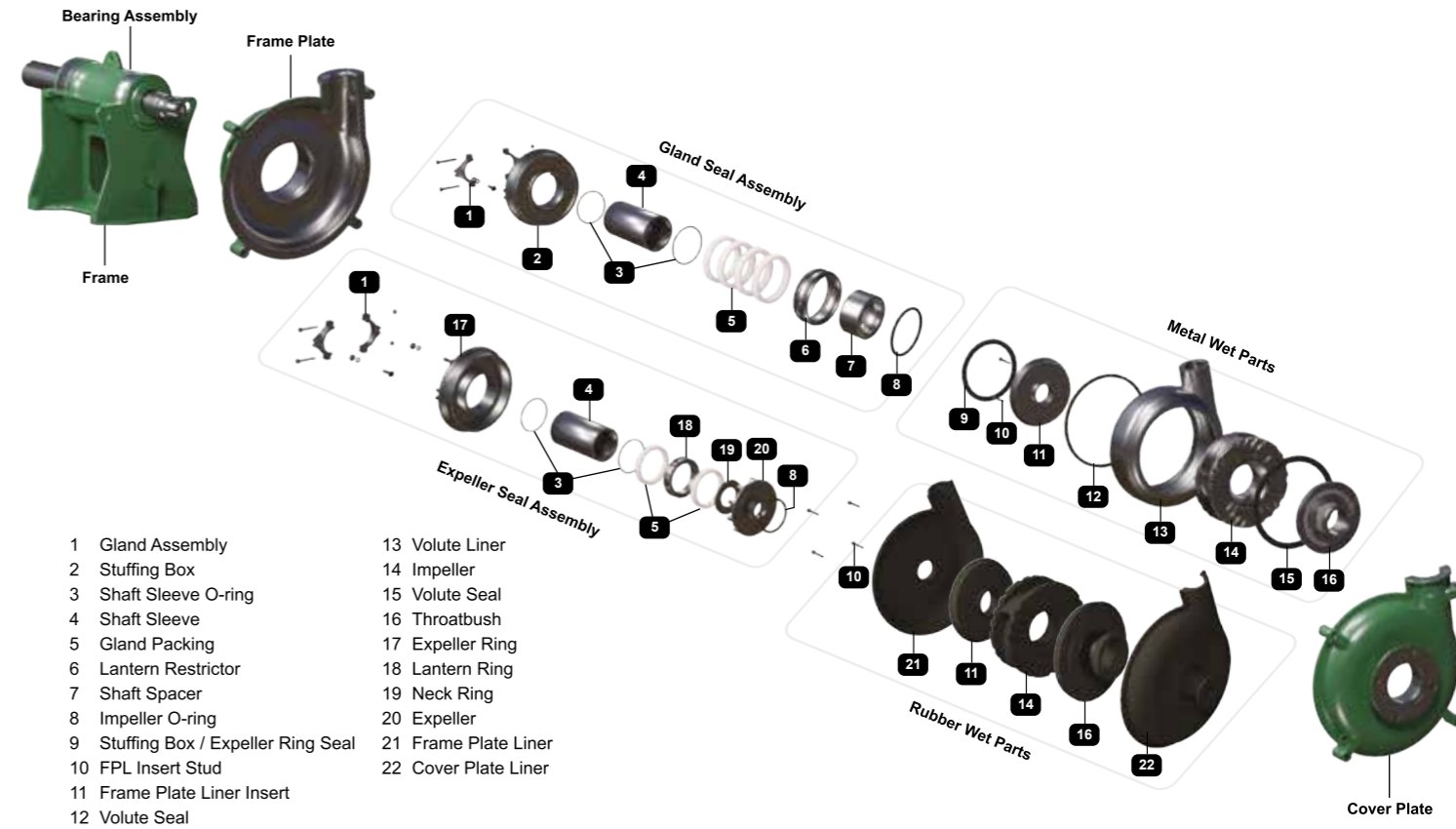
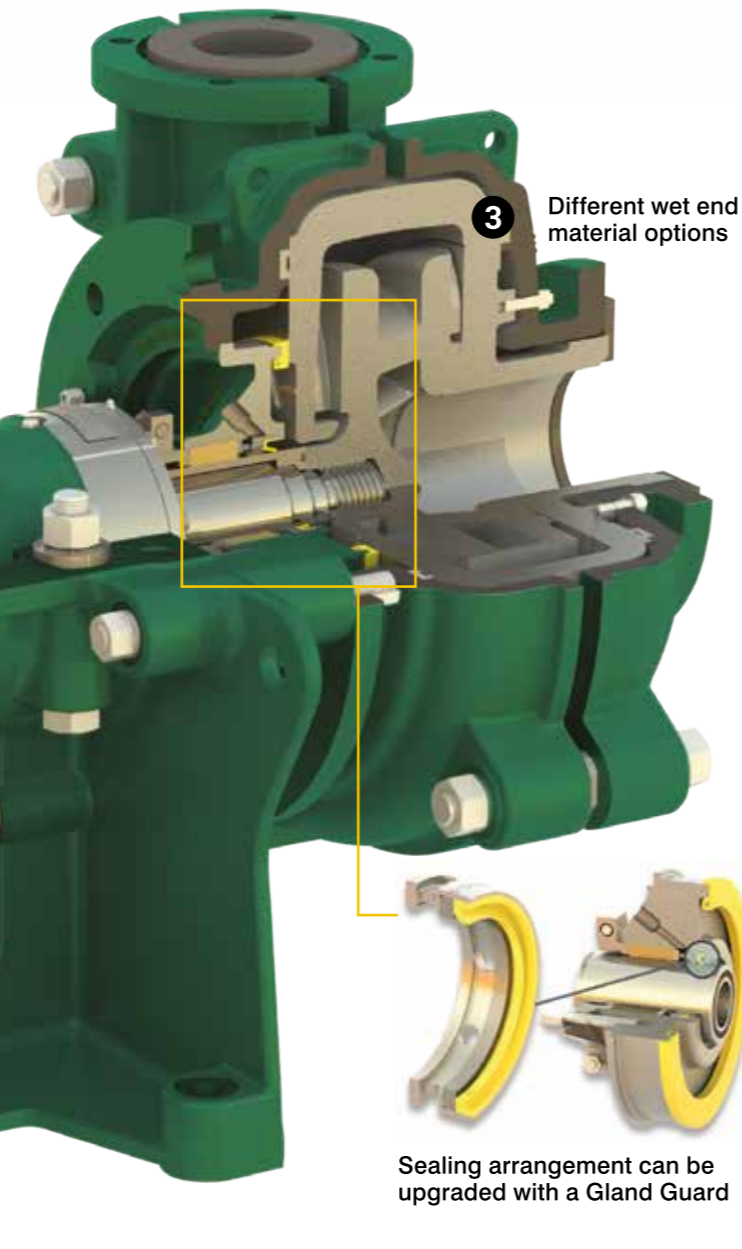
- **Size range** (discharge) 25 mm to 450 mm (1" to 18")
- **Capacities to** 5 000 m<sup>3</sup>/hr (22 000 gpm)
- **Heads to** 73 m (240 ft)
- **Pressure to** 2 020 kPa (300 psi)

### Applications:

- Mineral processing
- Low pressure tailings
- Mill discharge
- Coal preparation

### Benefits of the SafeR® series pump:

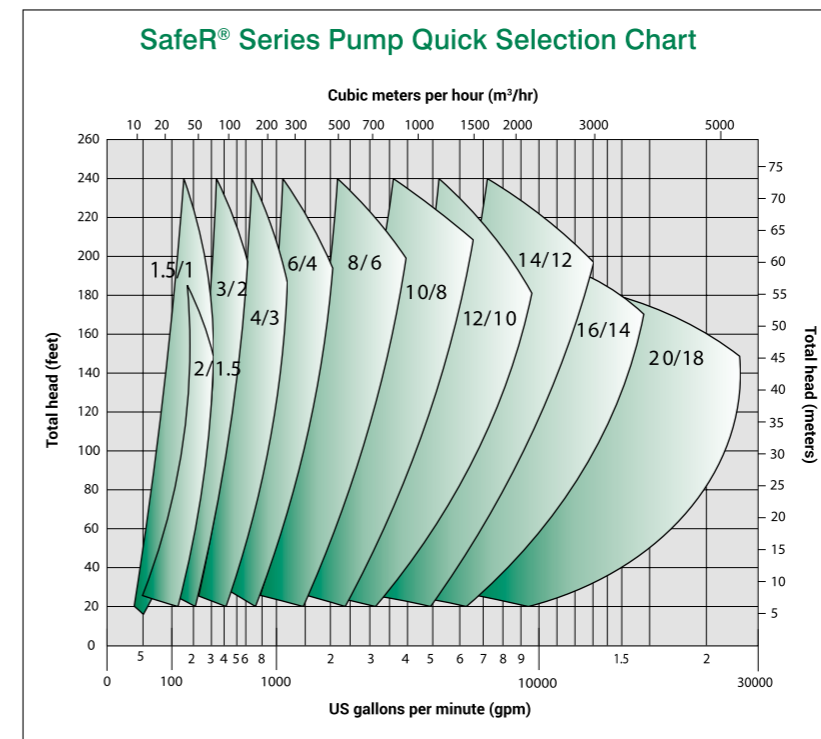
- 1 Sealing mechanism:** a variety of seals are available including packed gland, expeller or mechanical seal. The sealing arrangement can be upgraded with a Gland Guard which reduces flush water costs and keeps slurry out of gland packing, extending overall wear life. Flushless designs are available on request.
- 2 Bearing assembly:** all bearings are heavy duty to reduce stock requirements and extend wear life. They can be upgraded with a Bearing Guard which last at least triple the life of conventional piston ring designs.
- 3 Wet end:** material options include hard metals, polyurethane, or rubber.
- 4** Enhanced efficiency and improved wear performance.



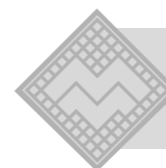
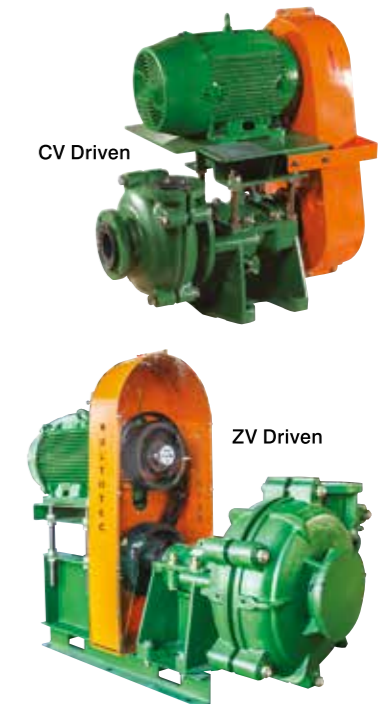
- |                                     |                      |
|-------------------------------------|----------------------|
| 1 Gland Assembly                    | 13 Volute Liner      |
| 2 Stuffing Box                      | 14 Impeller          |
| 3 Shaft Sleeve O-ring               | 15 Volute Seal       |
| 4 Shaft Sleeve                      | 16 Throatbush        |
| 5 Gland Packing                     | 17 Expeller Ring     |
| 6 Lantern Restrictor                | 18 Lantern Ring      |
| 7 Shaft Spacer                      | 19 Neck Ring         |
| 8 Impeller O-ring                   | 20 Expeller          |
| 9 Stuffing Box / Expeller Ring Seal | 21 Frame Plate Liner |
| 10 FPL Insert Stud                  | 22 Cover Plate Liner |
| 11 Frame Plate Liner Insert         |                      |
| 12 Volute Seal                      |                      |

	Liners	Impellers	Expellers Rings	Expeller	Shaft Sleeve	Seals Castings	External
Standard	Chrome iron Natural rubber	Chrome iron Natural rubber	Chrome iron Polyurethane	Chrome iron Polyurethane	Stainless steel TC Coated 2205	Natural rubber Polyurethane	Ductile iron
Options	Various irons Chrome Moly Various polymers Stainless steel	Various irons Chrome Moly Various polymers Stainless steel	Stainless steel	Stainless steel	Wolfram	Various polymers	Carbon steel Stainless steel

Please note: Specialist materials available on request



### Drive Arrangements



**Size range** (discharge)  
25 mm to 450 mm (1" to 18")

**Capacities to**  
5 000 m<sup>3</sup>/hr (22 000 gpm)

**Heads to**  
73 m (240 ft)

**Pressures to**  
2 020 kPa (300 psi)



# MULTOTEC

## STEINHAUS



[www.multotec.com](http://www.multotec.com)

Please visit our website for contact details of all our global locations.

- | Screening Solutions | Mineral Processing Equipment | Sampling Solutions |
- | Wear Lining Solutions | Mill and Scrubber Linings | Solid / Liquid Separation Solutions |
- | Conveyor System Solutions | Pumps | Process Water Treatment and Metals Recovery |



This document and its content is the copyright of Multotec (Pty) Ltd - 2021. All rights reserved. Any redistribution or reproduction of part or all of the contents in any form is prohibited and you may not, except with our express written permission and/or as allowed in terms of the Copyright Act of 1978 and its amendments, distribute or commercially exploit the content, nor may you transmit it or store it in any other website or other form of electronic retrieval system.